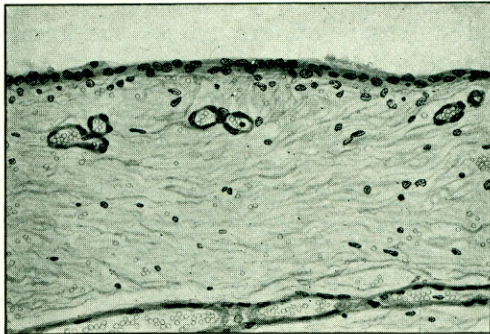
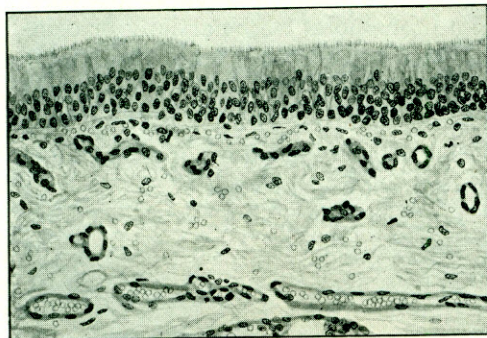


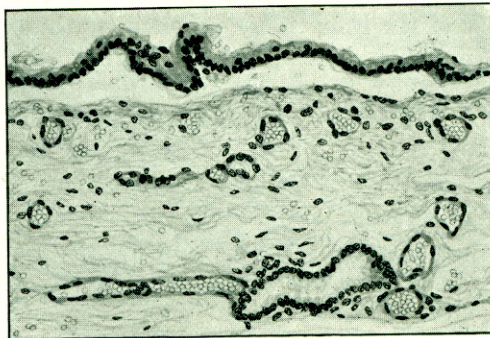
A



B



C



D

FIG. 91.—A comparison of the injury to the tracheal mucosa by chloropicrin, phosgene, and chlorine. A, Chloropicrin, with damaged but intact epithelium; B, chloropicrin with sloughing of superficial epithelial layer; C, phosgene, with undamaged mucosa; D, chlorine, with killed and exfoliated mucosa