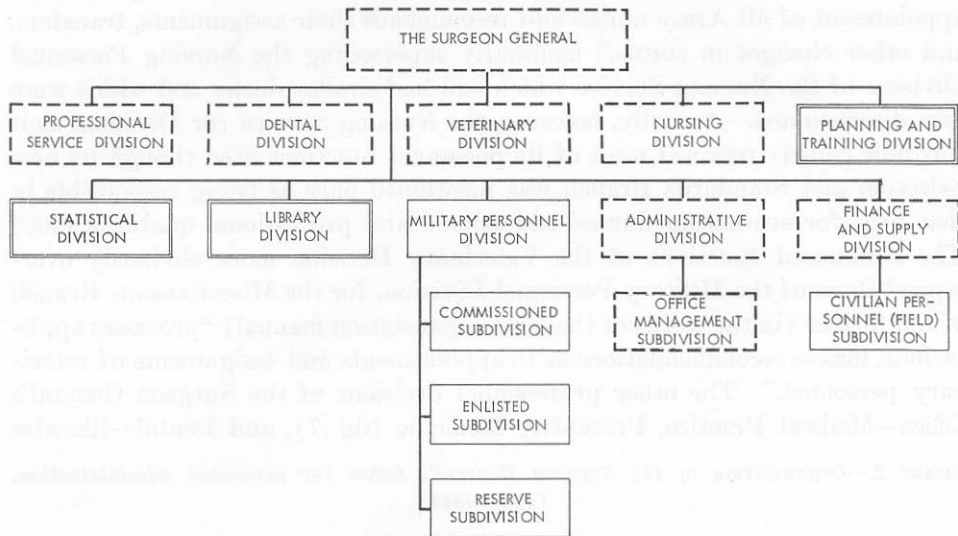


CHART 1.—*Organization of the Surgeon General's Office for personnel administration, January 1939*



ELEMENTS WHOLLY CONCERNED WITH PERSONNEL ADMINISTRATION.



ELEMENTS PARTLY CONCERNED WITH PERSONNEL ADMINISTRATION.



ELEMENTS NOT CONCERNED WITH PERSONNEL ADMINISTRATION.