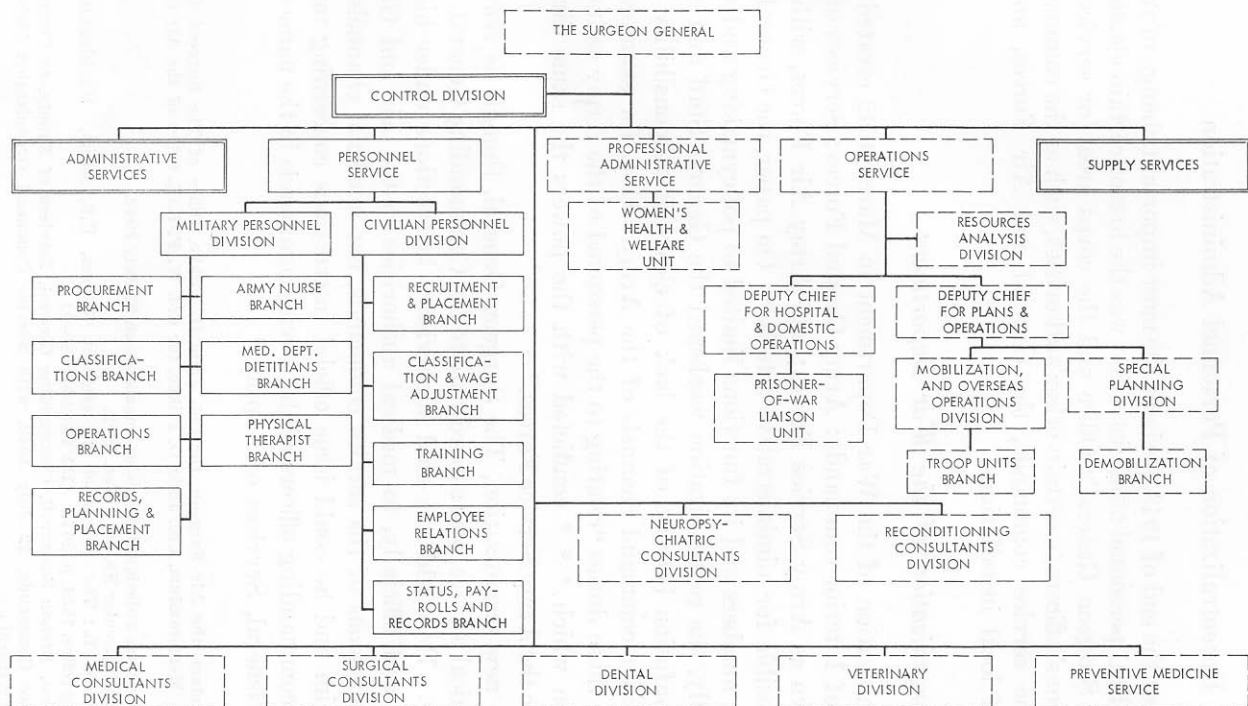


CHART 4.—*Organization of the Surgeon General's Office for personnel administration, May 1945*



- ELEMENTS WHOLLY CONCERNED WITH PERSONNEL ADMINISTRATION.
- ELEMENTS PARTLY CONCERNED WITH PERSONNEL ADMINISTRATION.
- ELEMENTS NOT CONCERNED WITH PERSONNEL ADMINISTRATION.