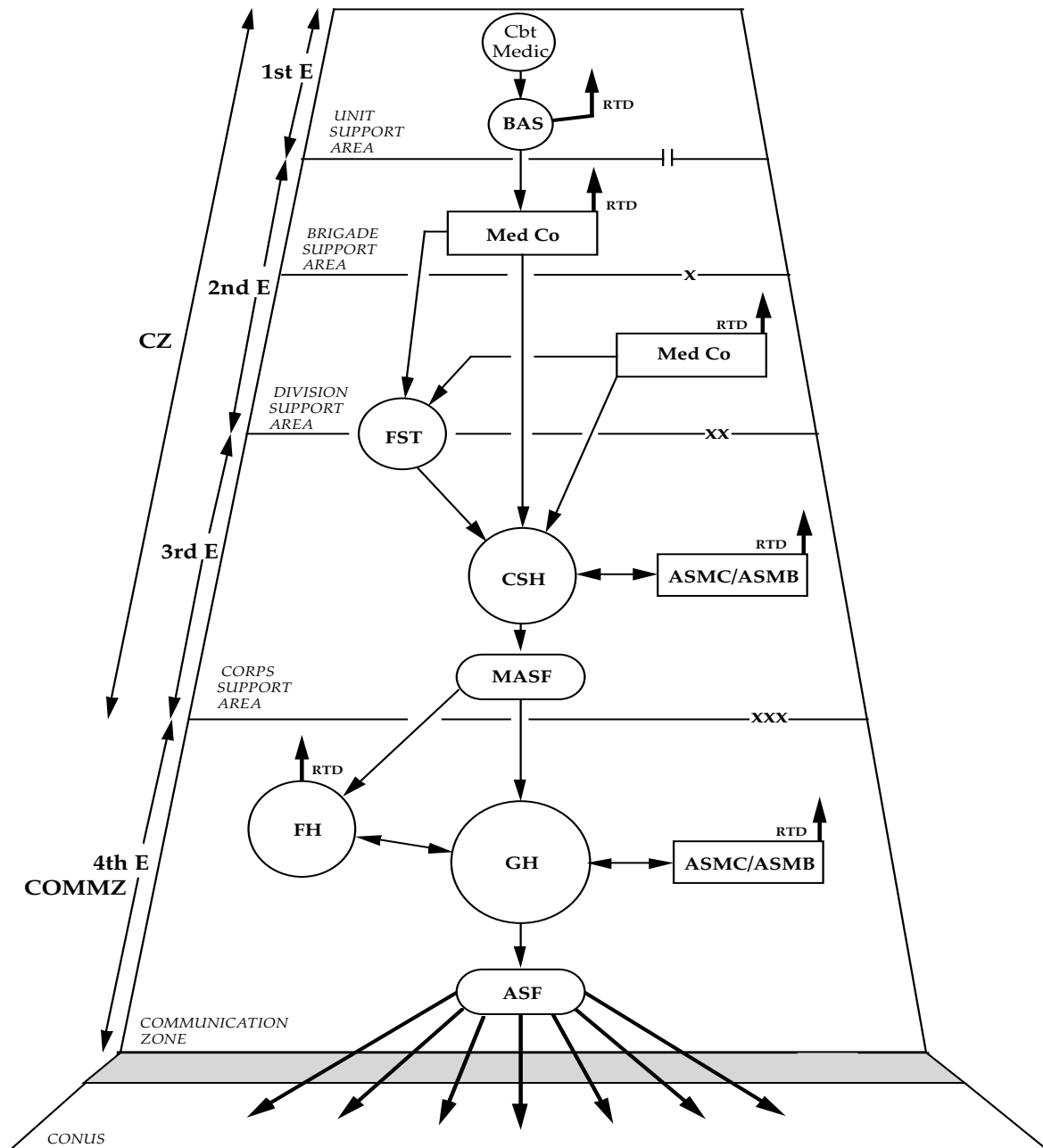

The current medical system to support the U.S. Army at war is a continuum from the forward line of troops through the continental United States; it serves as a primary source of trained replacements during the early stages of a major conflict. The system is designed to optimize the return to duty of the maximum number of trained combat soldiers at the lowest possible level. Far-forward stabilization helps to maintain the physiology of injured soldiers who are unlikely to return to duty and allows for their rapid evacuation from the battlefield without needless sacrifice of life or function.

Medical Force 2000 (MF2K) PATIENT FLOW IN A THEATER OF OPERATIONS



ASF: Aeromedical Staging Facility, USAF
 ASMB: Area Support Medical Battalion
 ASMC: Area Support Medical Company
 BAS: Battalion Aid Station
 Cbt Medic: Combat Medic
 CSH: Combat Support Hospital
 COMMZ: Communication Zone
 CZ: Combat Zone

E: Echelon
 FH: Field Hospital
 FST: Forward Surgical Team
 GH: General Hospital
 MASF: Mobile Aeromedical Staging Facility, USAF
 Med Co: Medical Company
 RTD: Return to Duty